

National / Lyons expand their design legacy as Brisbane's Liveris Academy draws closer to reality

PROJECT DATABASE

SEARCH

Tweet

0

Like

Share

Subur

- Any

Postc

Share

Project

- Any

Local

Email

Area

- Any -

Architect

- Any -

Developer

- Any -

Builder

- Any -

Project Type

Residential

Commercial

Institutional

Mixed Use

Retail

Transportation

Hotel

Serviced Apartmen

Results per page

10

Search

Reset



## LYONS EXPAND THEIR DESIGN LEGACY AS BRISBANE'S LIVERIS ACADEMY DRAWS CLOSER TO REALITY

SUN, 22/04/2018 - 12:00 MARK BALJAK

This month's announcement that University of Queensland's Sustainable Futures Building is drawing closer to reality has given cause to touch upon architecture firm Lyons' stellar design legacy across multiple Australian cities.

Lyons in association with m3architecture won the design competition for the development during late 2015, but the project has only this month received a major boost with alumni Andrew N. Liveris pledging \$13.5 million to take the project from design to reality. The intended 11-storey engineering, education and research hub will now be known as the Liveris Academy.

At University of Queensland's St Lucia campus, Liveris Academy is yet another project which showcases Lyons' uncommon design traits.



University of Queensland's newest addition. Image: Lyons

Having won a Design Competition in late 2015, Lyons and m3architecture have now commenced Schematic Design and Design Development work on the new Sustainable Futures Building, a major investment by the University of Queensland for their School of Chemical Engineering and new campus learning spaces.

The project will be UQ's flagship platform to integrate innovative teaching with interdisciplinary and solutions focused research by incorporating a range of collaborative spaces with overlapping boundaries between learning, research and industry.

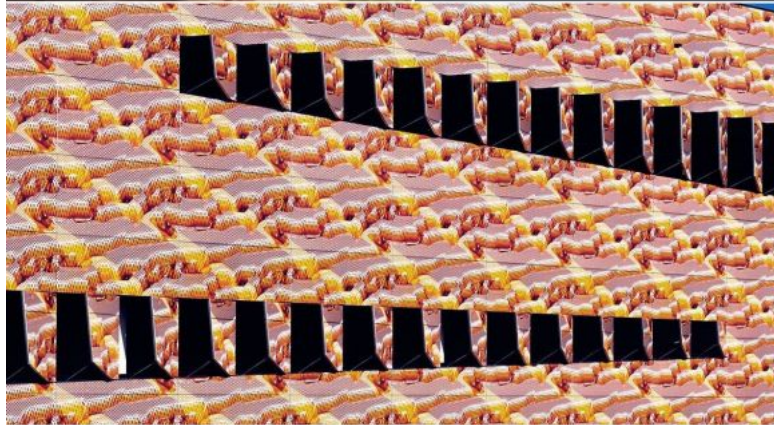
The new spaces will act as a vibrant hub for industry and interdisciplinary collaboration that will address global challenges such as energy, water and sustainable manufacturing.

— Lyons

Expected to be built by 2020, Liveris Academy's multicoloured facade and sandstone base are distinctive design features. Protruding design elements are very much in keeping with Lyons' design style, as evidenced by existing projects such as Melbourne's LIMS Building and Newcastle University's New Space project.

In terms of Liveris Academy, an open aired staircase provides the form-breaking design aspect; it along with common spaces add to the design's standpoint of being 'outwardly open and transparent, while inwardly intense and focused'.

Liveris Academy is but one of many Lyons projects across the nation that are readily recognisable. In shape, style and especially colour, Lyons designs are exceedingly unique. This is particularly the case with their education and research-based designs, of which a sample are shown below.



Lyons' not so uniform approach to design

Next on Lyons' agenda is the position of design lead for University of Melbourne's forthcoming New Student Precinct project. During March it was announced that University of Melbourne's Parkville campus will play host to nine refurbished or redeveloped buildings which will amalgamate a range of services and university bodies.

The \$229 million project will see Lyons head an expanded design team which includes United States-based Koning Eizenberg Architects, Aspect Studios, Breathe Architecture, NMBW Architecture Studio, Greenaway Architects, Glas Urban and Architects EAT.



Lyons' depiction of University of Melbourne's new \$229m student precinct

Tags: Lyons Architecture m3architecture Brisbane Design Melbourne

Log in or register to post comments.

Back to top

BUY APARTMENTS OFF THE PLAN



RECENT ARTICLE COMMENTS

#### PONDERING WHERE UNDERGROUND LIGHT RAIL MIGHT SUIT MELBOURNE

- pdoff: The 'Background paper' for the Transport Strategy refresh was released by COM last month. Its seems to have slipped most people by.  
<https://participate.melbourne.vic.gov.au/application/files/1915/2412/406...> It's a ... 1 day 4 hours ago
- Urban A: In my view,a real blockage to the tram network exists along Keilor Road in North Essendon and Niddrie. The Airport West tram is the only ... 4 days 1 hour ago
- Alastair Taylor: Interesting report out from IV today - cast your minds back to some of those examples above inner-north / inner orbital. This map shows the ... 4 days 6 hours ago

#### MCG'S DECKING PROPOSAL COULD BE THE CATALYST FOR FED SQUARE EAST?

- George D: How much would it cost? \$100m? \$300m? \$500m? \$1b? There are a few other places where covering a rail trench and creating a 'bridge' between ... 3 days 5 hours ago

#### TRAM NETWORK SCORES A ROUND OF SERVICE FREQUENCY INCREASES IN NEW MAY TIMETABLE

- George D: At the moment there are only 10 accessible trams on the 58 route, which means being able to get on